



RYE FIRE INCIDENT UPDATE

Date: 12/8/2017 Time: 6:00 PM



@LACoFDPIO
@CAL_FIRE
@LASDHQ



LACoFD
CALFIRE
LosAngelesCountySheriffsDepartment

Prerecorded Info Line: (949) 616-4756
Incident Information Line: (424) 266-0701

Incident Websites:
www.fire.lacounty.gov/rye-fire/
www.fire.ca.gov/current_incidents

INCIDENT FACTS

Incident Start Date: 12/5/2017		Incident Start Time: 9:32 AM PST	
Incident Type: Wildfire		Cause: Under Investigation	
Incident Locations: 25101 Rye Canyon Loop, Santa Clarita, CA 91355 (surrounding areas of Santa Clarita)			
Acreage: 6,049		Containment: 50%	
Firefighter Injuries: 1	Civilian Fatalities: 0	Expected Full Containment: 12/15/2017	
Structures Threatened: 5,460	Structures Destroyed: 1	Structures Damaged: 0	

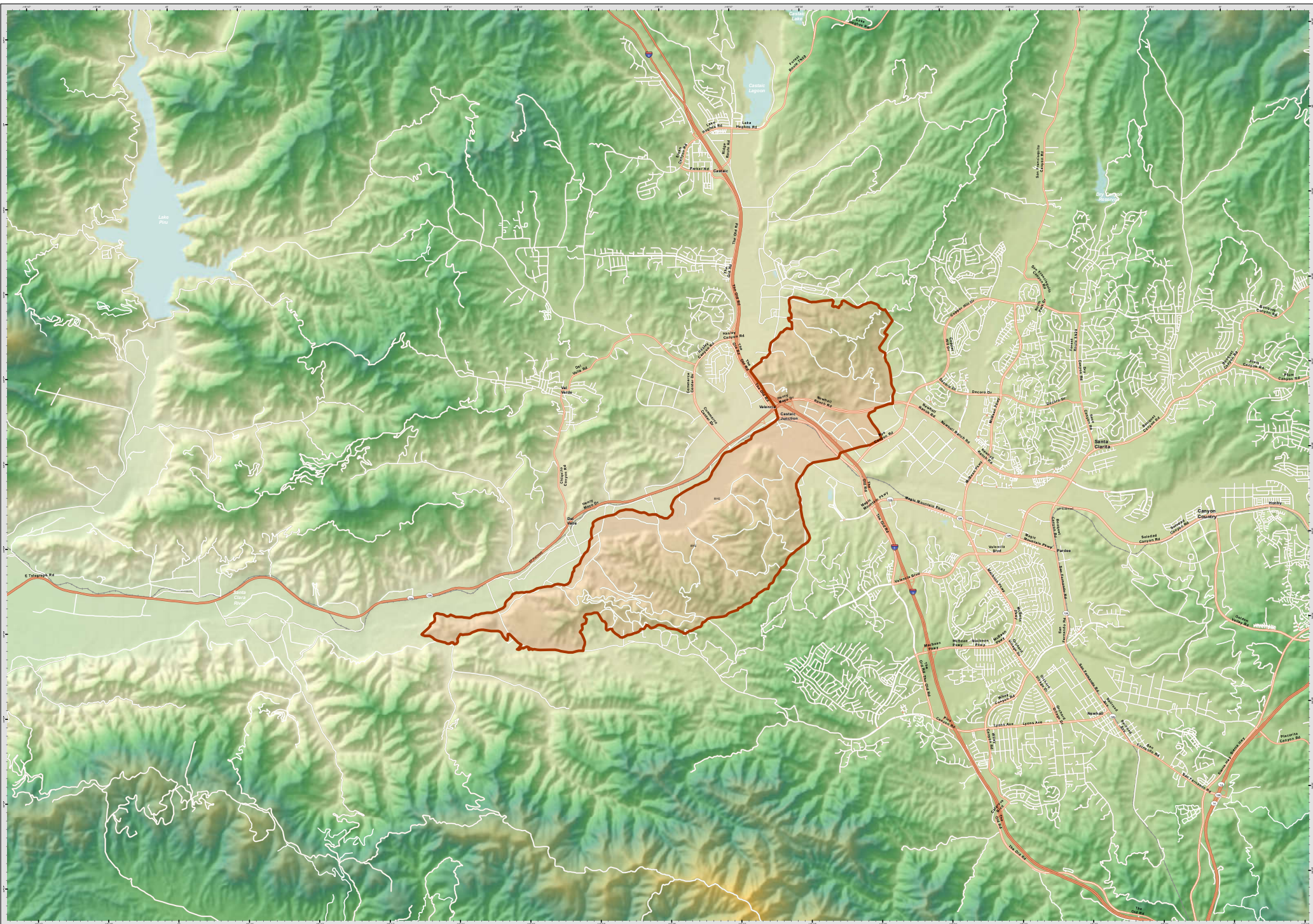
CURRENT SITUATION

Current Situation:	Favorable conditions helped firefighters make considerable progress today. This evening crews will continue to mop up and monitor perimeter lines. Critical Red Flag conditions will persist over most of Los Angeles. Residents should remain vigilant as conditions can change quickly.
Evacuations:	None
Road Closures:	None

ASSIGNED RESOURCES

Engines: 69	Water Tenders: 7	Helicopters: 2	Air Tankers: 0	Hand Crews: 24
Dozers: 2	Other: 2	Total Personnel: 813		

Cooperating Agencies: Ventura County Fire Department, CAL OES, City of Santa Clarita, Southern California Edison, CDCR, California Conservation Corps, SoCal Gas, Simi Valley PD, and LA County Public Works



PIO MAP
 Rye Incident
 October 8, 2017

0 0.5 1
 Miles

1:24,000

MT & GIS
 1/27/2017
 2224 Hours
 NAD 83 North Albers



Fire Edge



PUBLIC INFORMATION MAP
 Rye Incident
 CALAC-36241
 December 8, 2017

PIO MAP
 Rye Incident
 December 8, 2017