



RYE FIRE INCIDENT UPDATE

Date: 12/9/2017 Time: 6:00 AM



@LACoFDPIO
@CAL_FIRE
@LASDHQ



LACoFD
CALFIRE
LosAngelesCountySheriffsDepartment

Prerecorded Info Line: (949) 616-4756
Incident Information Line: (424) 266-0701

Incident Websites:
www.fire.lacounty.gov/rye-fire/
www.fire.ca.gov/current_incidents

INCIDENT FACTS

Incident Start Date: 12/5/2017		Incident Start Time: 9:32 AM PST	
Incident Type: Wildfire		Cause: Under Investigation	
Incident Locations: 25101 Rye Canyon Loop, Santa Clarita, CA 91355 (surrounding areas of Santa Clarita)			
Acreage: 6,049		Containment: 65%	
Firefighter Injuries: 1	Civilian Fatalities: 0	Expected Full Containment: 12/15/2017	
Structures Threatened: 5,460	Structures Destroyed: 1	Structures Damaged: 0	

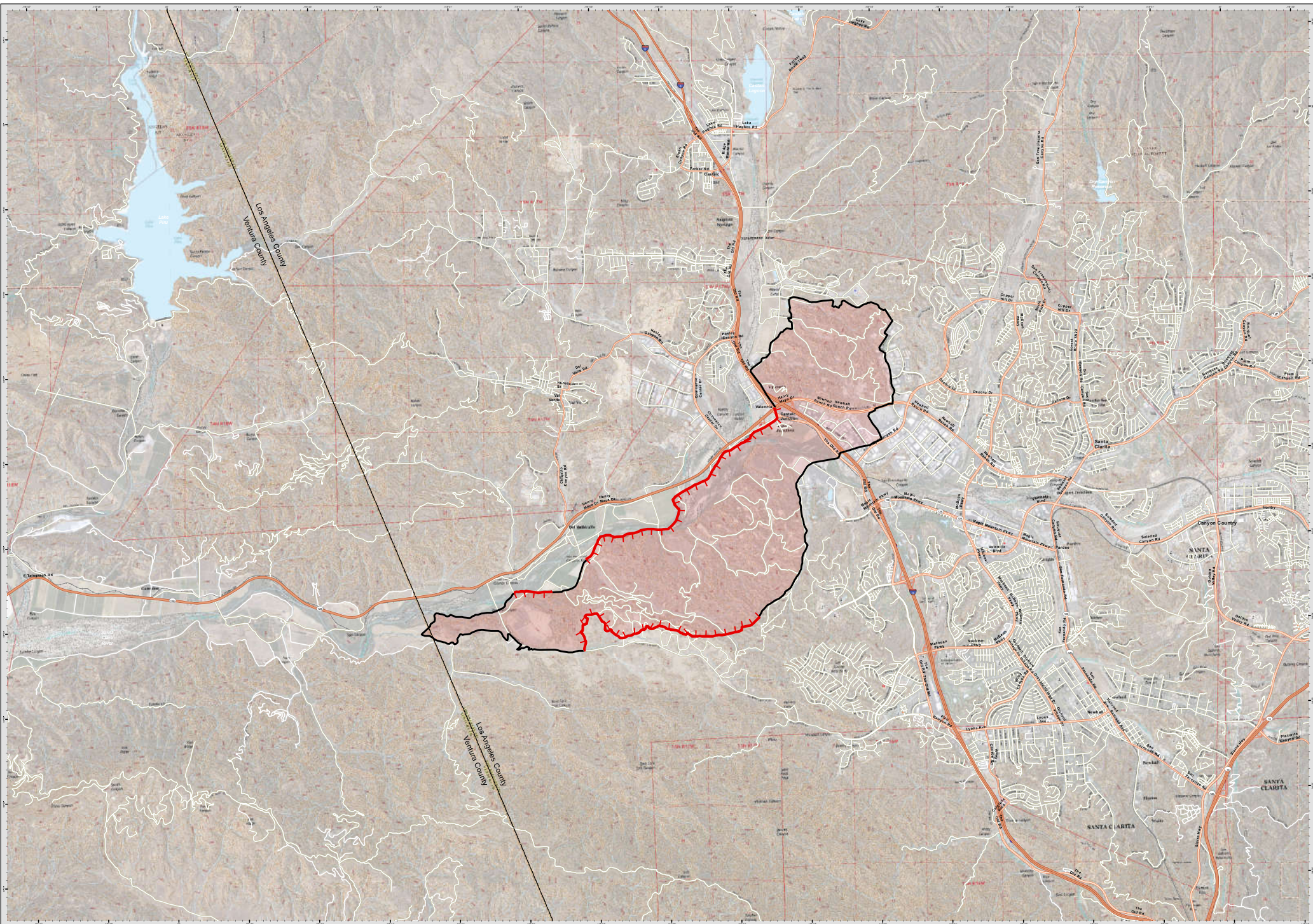
CURRENT SITUATION

Current Situation:	Overnight firefighters continued to make progress. Mop up will continue throughout today to ensure that the fire remains within the established control lines. Red Flag warnings in effect for much of Los Angeles County through Sunday with gusty winds and low relative humidity. Residents should remain vigilant as conditions can change quickly.
Evacuations:	None
Road Closures:	None

ASSIGNED RESOURCES

Engines: 69	Water Tenders: 7	Helicopters: 2	Air Tankers: 0	Hand Crews: 24
Dozers: 2	Other: 2	Total Personnel: 813		

Cooperating Agencies: Ventura County Fire Department, CAL OES, City of Santa Clarita, Southern California Edison, CDCR, California Conservation Corps, SoCal Gas, and LA County Public Works



PIO MAP
Rye Incident
December 9, 2017

0 0.5 1
Miles

1:24,000

RT & GIS
12/8/2017
8:15 Hours
NAD 83 North Zone

W N E
S

Uncontrolled Fire Edge
Completed Line



PUBLIC INFORMATION MAP
Rye Incident
CALAC-362441
December 9, 2017

