



# RYE FIRE INCIDENT UPDATE

Date: 12/9/2017 Time: 6:00 PM



@LACoFDPIO  
@CAL\_FIRE  
@LASDHQ



LACoFD  
CALFIRE  
LosAngelesCountySheriffsDepartment

Prerecorded Info Line: (949) 616-4756  
Incident Information Line: (424) 266-0701

### Incident Websites:

[www.fire.lacounty.gov/rye-fire/](http://www.fire.lacounty.gov/rye-fire/)  
[www.fire.ca.gov/current\\_incidents](http://www.fire.ca.gov/current_incidents)

## INCIDENT FACTS

Incident Start Date: 12/5/2017		Incident Start Time: 9:32 AM PST	
Incident Type: Wildfire		Cause: Under Investigation	
Incident Locations: 25101 Rye Canyon Loop, Santa Clarita, CA 91355 (surrounding areas of Santa Clarita)			
Acreage: 6,049		Containment: 80%	
Firefighter Injuries: 1	Civilian Fatalities: 0	Expected Full Containment: 12/15/2017	
Structures Threatened: 5,460	Structures Destroyed: 6	Structures Damaged: 3	

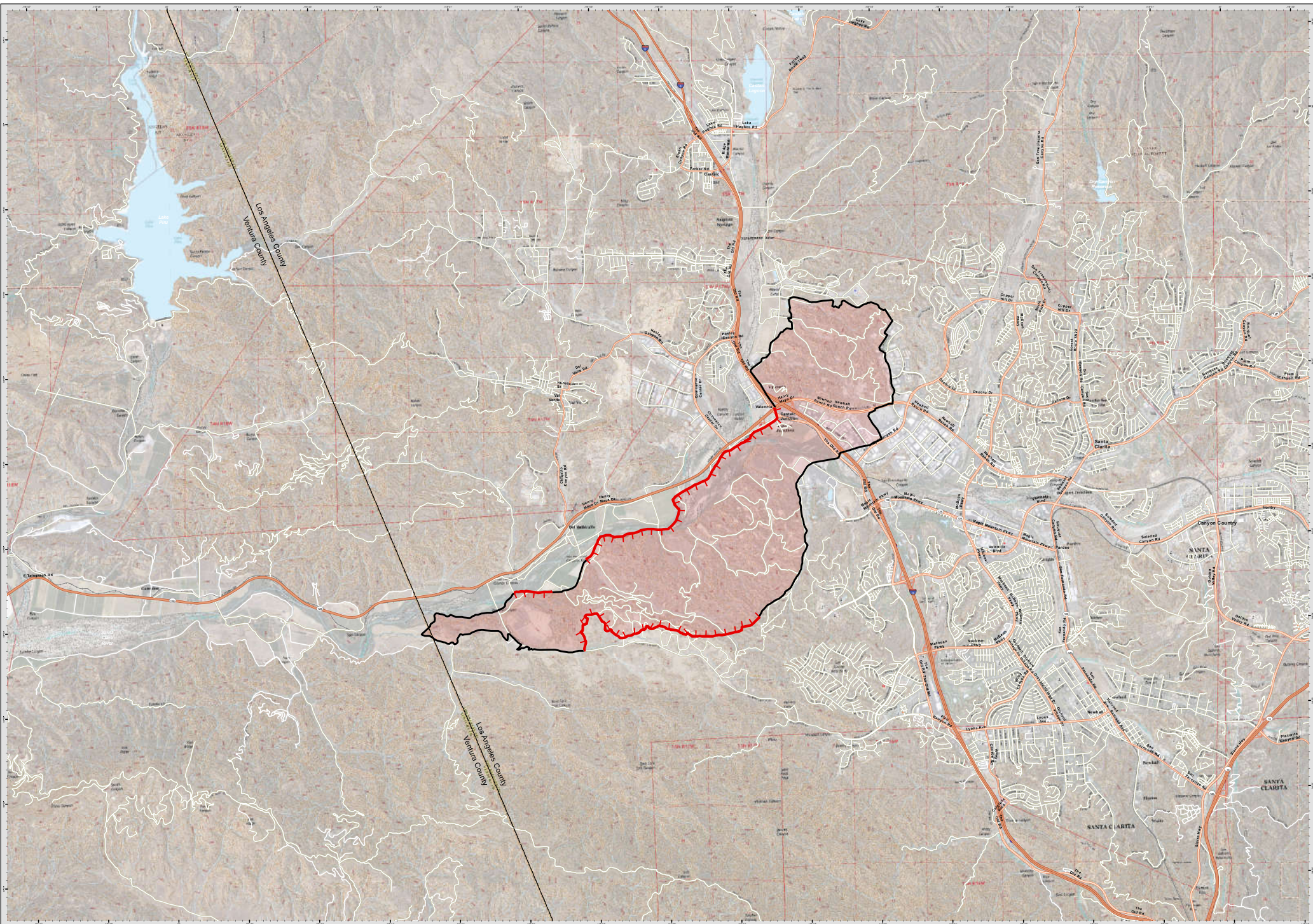
## CURRENT SITUATION

<b>Current Situation:</b>	Firefighters continued to bolster containment lines today. More detailed damage assessment revealed increased damaged and destroyed minor structures located within the confines of the Peter J. Pitchess Detention Center property. Red Flag warnings in are in effect for much of Los Angeles County and may be extended through Monday. Residents should remain vigilant as conditions can change rapidly.
<b>Evacuations:</b>	None
<b>Road Closures:</b>	None

## ASSIGNED RESOURCES

Engines: 59	Water Tenders:	Helicopters: 2	Air Tankers: 0	Hand Crews: 20
Dozers: 0	Other: 2	Total Personnel: 711		

**Cooperating Agencies:** Ventura County Fire Department, CAL OES, City of Santa Clarita, Southern California Edison, CDCR, California Conservation Corps, SoCal Gas, and LA County Public Works



**PIO MAP**  
Rye Incident  
December 9, 2017

0 0.5 1  
Miles

1:24,000

RT & GIS  
12/8/2017  
8:15 Hours  
NAD 83 North Zone

W N E  
S

Uncontrolled Fire Edge  
Completed Line



**PUBLIC INFORMATION MAP**  
Rye Incident  
CALAC-362441  
December 9, 2017



**PIO MAP**  
Rye Incident  
December 9, 2017